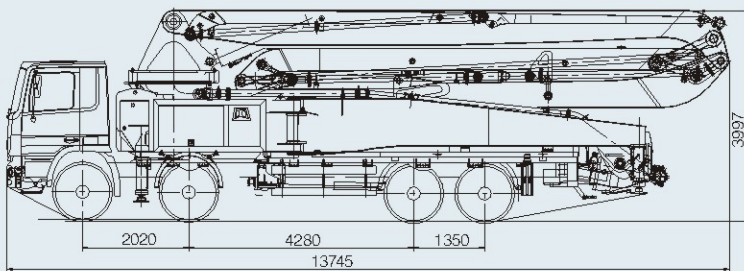


52X-6RZ

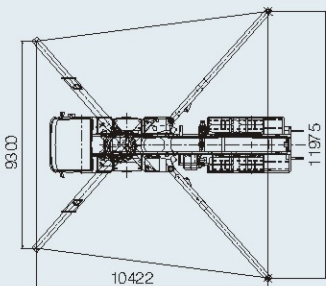


Dimensions

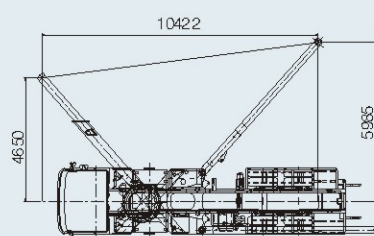


Dimensions varying according to truck assembly

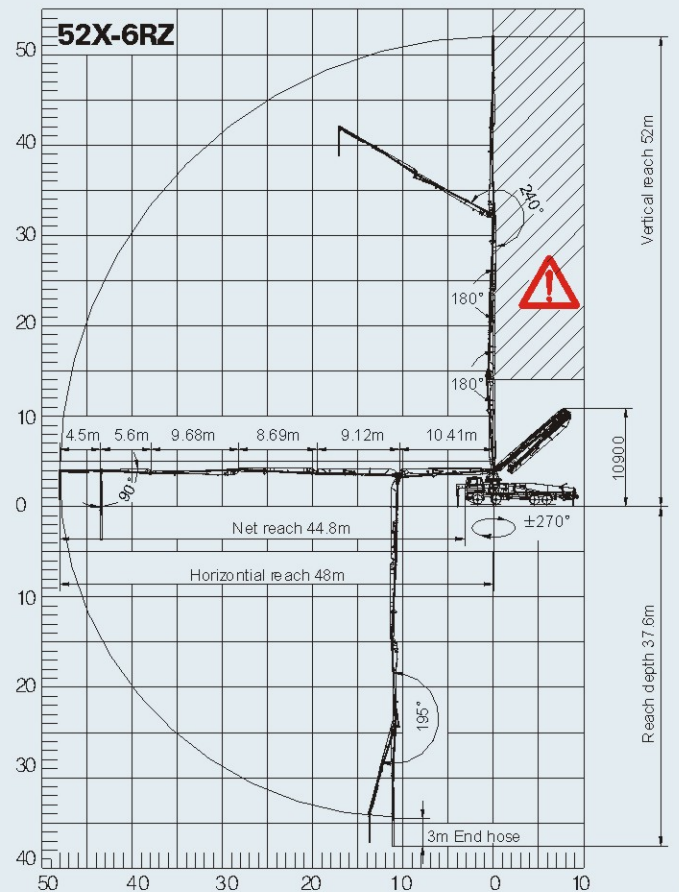
Full Support



Lateral Support



52X-6RZ



52X-6RZ

Main Features

- Compact in design, 52m pump mounted on 4-axle truck, total weight is within the limit of truck load.
- Efficient pump unit: consist of 2 Rexroth 180 main pumps, which generates 90 bar pressure on concrete with smooth flow of 180m³/h.
- Agile placing boom with 6 arms gives a wide work range.
- Controller is designed for heavy duty use, with a monitor, it monitors the pump intelligently on working data management, real-time diagnostics, alarm logging, and service interval notice.
- Rich in configurations and high quality components.

Standard Supply

- 1 proportional radio control with 20m cable
- Pneumatic auto lubrication on mixing and pumping unit
- Controller with monitor
- MBIT (Multi-Boom intelligent Technology) control
- Optimized hopper with agitator
- Special alloy wearing plate and cutting ring
- Long-life delivery pipeline
- Rear light on hopper, horn on boom
- Outrigger support platesx4 with housing
- High pressure water pump
- Accessories for cleaning and pipes washing
- Blue and white color painting with wax protection
- Traffic permission kit
- Tool kit for daily maintenance
- Two Use & Maintenance Manuals
- Spare parts and service Manual

Optional

- Additional remote control with 20m cable
- Automatic High/Low pressure switch
- Other configuration on demand

Distribution valve	S-valve	
Max. Concrete Output	m ³ /h	180
Max. Concrete Pressure	bar	90
Delivery Cylinder	mm	260
Stroke Length	mm	2100
Strokes	1/min	27
Hopper Capacity	L	600
Filling height	mm	1540
Hydraulic System	Closed	
Hydraulic oil cooling	Double fans	
Lubrication on pump	Automatic	
Lubrication on hopper	Automatic	
GPS Data Manage	Optional	

Boom Control Valve	Proportional	
Number of Arms		6
Folding System		RZ
Max. Reach Vertical	m	52
Max. Reach Horizontal	m	48
Max. Reach Depth	m	37.6
Min. Unfolding Height	m	10.9
End Hose Length	m	3
Pipeline	DN125/5.5	
Slewing Range	± 270°	
Slewing Motors	2 motors	
Remote Control System	Radio	
Water Pump	20L/min, 60bar	
Tool kits with box	Standard	

Technical data and characteristic subject to modifications without notice